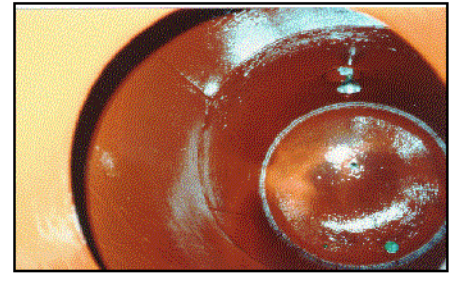
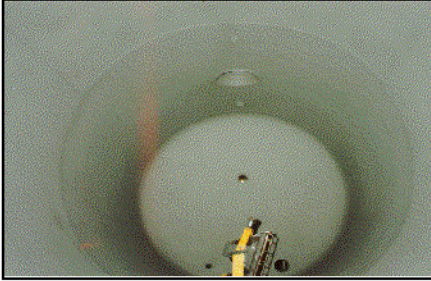




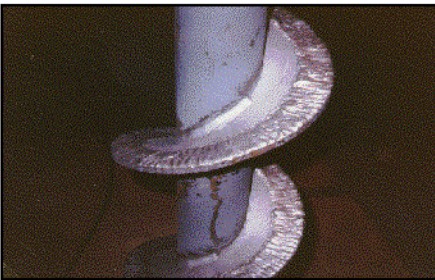
LIQUER TANK COATING

CASE HISTORY #017 REV.04-97



CONCRETE AGGREGATE FEED SCREW

CASE HISTORY #018 REV.04-97



Abrasive-blasted aggregate feed screw



Hand-applied ARCOR™ S-16 White

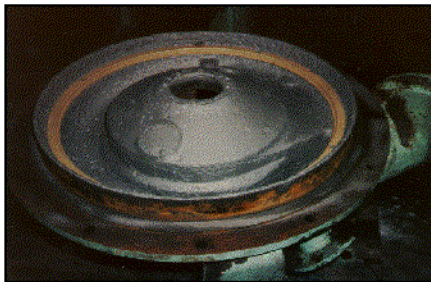


Hand-applied top coat of ARCOR™ S-20

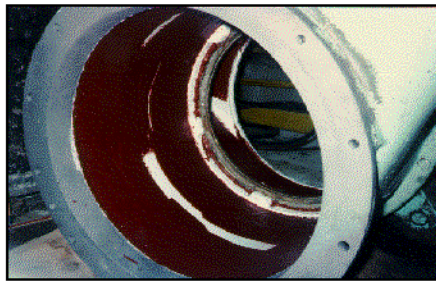
Concrete aggregate feed screw veins were badly eroded from wear and needed to be rebuilt. ARCOR™ applied a primer coat of ARCOR™ S-16. This particular installation only called for two coats of protective coating. Screw veins were top coated with ARCOR™ S-20 Black, veins only. Equipment has been back in service for 5 years with no problems.

PAPER MILL SELECTIFIER SCREEN REBUILD

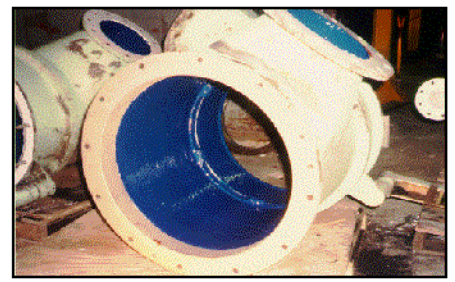
CASE HISTORY #019 REV.04-97



Screen is white-metal blasted.



Rebuilt surface with ARCOR™ TS-RB.



Hand-applied top coat ARCOR™ S-30.

Selection screen, after many years of service, suffered severe corrosion. Screen was first abrasive-blasted to white metal. Badly pitted areas were rebuilt with ARCOR™ TS-RB to factory specifications. Completed with a top coat of hand-applied ARCOR™ S-30 Blue.